

# Tube & Pipe Fittings



## 双套管及接头系列

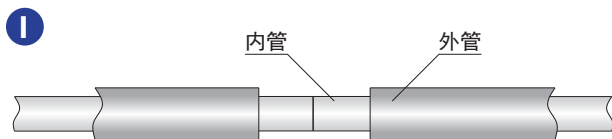
### 简介

内管为工艺管，通过从原材料、电解抛光、清洁、包装等方面严格要求工艺规范，以达到超高纯流体系统的高洁净度、高性能的要求。外管为安全管，如若内管发生泄漏，溢出介质可流入安全空间。双套管系统只需轨道焊接安装，简单方便，可集成至已有系统和设施中。



### 连接方式

管道与管道或管道与管件连接方式一

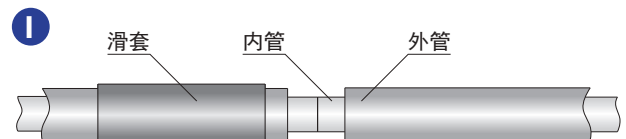


将内管通过轨道焊连接到一起，进行氦气检漏试验。

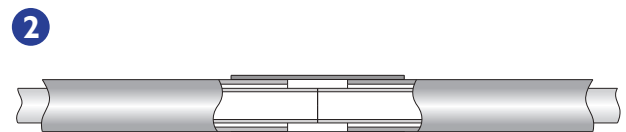


滑动外管使他们完全盖住内管，使用轨道焊进行连接，并进行氦气检漏试验。

管道与管道或管道与管件连接方式二

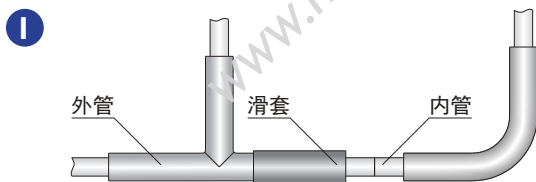


在外管上放置滑套，将内管通过轨道焊连接到一起，进行氦气检漏试验。

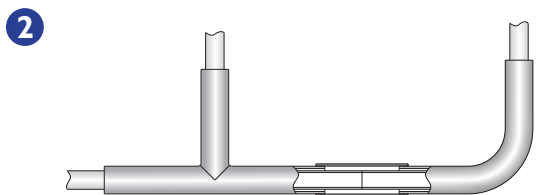


移动滑套，使滑套完全盖住两外管中的间隙，焊接至外管上，并进行氦气检漏试验。

管件与管件连接

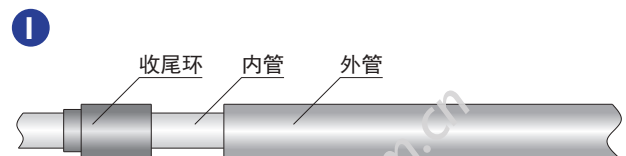


在其中一个管件外管上放置滑套，将内管通过轨道焊连接到一起，进行氦气检漏试验。

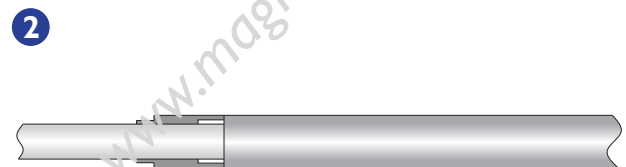


移动滑套，使滑套完全盖住两外管中的间隙，焊接至外管上，并进行氦气检漏试验。

封闭外管



将收尾环放置在內管上。



将收尾环一端与外管焊接，另一端焊接至內管外壁，并进行氦气检漏试验。

## 双套管件系列

### Coaxial Fittings Ordering Information 同轴双套管件订购信息

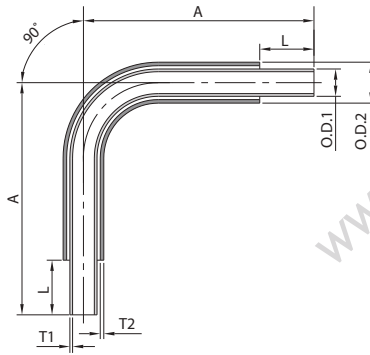
CDTB		S40V		W10		0812		0408		F3	
产品		内管材质		外管材质		主管尺寸		支管尺寸		表面处理	
CDT	COAXIAL DOUBLE TUBE 同轴双套管	W40	SUS316L 焊管	W40	SUS316L 焊管	内管尺寸	外管尺寸	内管尺寸	外管尺寸	BLANK	表面处理
CDEB	COAXIAL DOUBLE 90° ELBOW 同轴90°弯头	W10	SUS304 焊管	W10	SUS304 焊管	04	1/4"	04	1/2"	F1	BA Ras08µm
CDHEB	COAXIAL DOUBLE 45° ELBOW 同轴45°弯头	S40	SUS316L 无缝管	S40	SUS316L 无缝管	06	3/8"	06	5/8"	F2	EP Ras≤ 5µin (0.13µm)
CDTSB	COAXIAL DOUBLE EQUAL TEE 同轴等径三通	S10	SUS304 无缝管	S10	SUS304 无缝管	08	1/2"	08	3/4"	F3	EP Ras≤ 7µin (0.18µm)
CDTB	COAXIAL DOUBLE REDUCING TEE 同轴变径三通	S40V	SUS316L VAR 无缝管	S40V	SUS316L VAR 无缝管	12	3/4"	12	1"	F4	EP Ras≤ 10µin (0.25µm)
CDRCB	COAXIAL DOUBLE CONCENTRIC REDUCER双套变径大小头	S40W	SUS316L VIM+VAR 无缝管	S40W	SUS316L VIM+VAR 无缝管	16	1"	16	1 1/4"	F5	EP Ras≤ 20µin (0.50µm)
CDTM (F)	COAXIAL JOINT TEE (MALE / FEMALE) 同轴三通接管					24	1 1/2"	24	2"	F6	MP Ras≤ 40µin (1.00µm)
CDJTM(F)	CD COAXIAL DOUBLE JOINT TEE (W/MALE/FEMALE)同轴双联三通										AP Ras≤ 100µin (2.50µm)
CSL	COAXIAL SLEEVE 外套管										
CDVM(F)	COAXIAL DOUBLE FACE SEAL WELD GLAND (W/M/FEMALE) 同轴双面密封焊接压盖										
CTM	COAXIAL TERMINATOR 同轴收尾器										
CBH	COAXIAL BULKHEAD FITTING 同轴穿墙套件										

### 说明

- 1、管件圆周焊缝区域内表面和外表面的值未定义。
- 2、主管尺寸与支管相同时，支管尺寸代码将被省略，如1"同轴等径三通，选型代码为CDTSB-S40L-W10-1620-F3
- 3、“型号说明”仅用于说明型号组成规则，有些组合实际并不存在；如有疑问请联系迈格诺科相关业务。

# Tube & Pipe Fittings

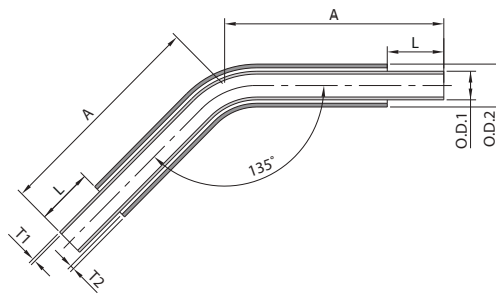
## Coaxial Double 90° Elbow 双套管90° 弯头



unit = mm

TUBE SIZE	Inner Tube Ø.D 1	Ø.D 1 Wall Thickness	Outer Tube Ø.D 2	Ø.D 2 Wall Thickness	L	A
1/4"	1/4"	0.89t/1t	1/2"	1.24t	25.4	111
3/8"	3/8"	0.89t/1t	5/8"	1.24t	25.4	104.6
1/2"	1/2"	1.24t	3/4"	1.65t	25.4	108
3/4"	3/4"	1.65t	1"	1.65t	44.5	171.5
1"	1"	1.65t	1 1/4"	1.65t	44.5	180.8
1 1/2"	1 1/2"	1.65t	2"	1.65t	50.8	212.6

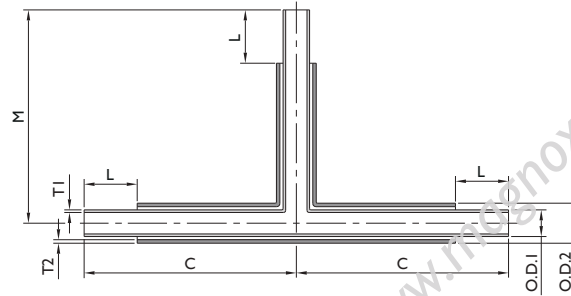
## Coaxial Double 45° Elbow 双套管45° 弯头



unit = mm

TUBE SIZE	Inner Tube Ø.D 1	Ø.D 1 Wall Thickness	Outer Tube Ø.D 2	Ø.D 2 Wall Thickness	L	A
1/4"	1/4"	0.89t/1t	1/2"	1.24t	25.4	101.6
3/8"	3/8"	0.89t/1t	5/8"	1.24t	25.4	98.3
1/2"	1/2"	1.24t	3/4"	1.65t	25.4	98.3
3/4"	3/4"	1.65t	1"	1.65t	44.5	155.4
1"	1"	1.65t	1 1/4"	1.65t	44.5	158.8
1 1/2"	1 1/2"	1.65t	2"	1.65t	50.8	180.8

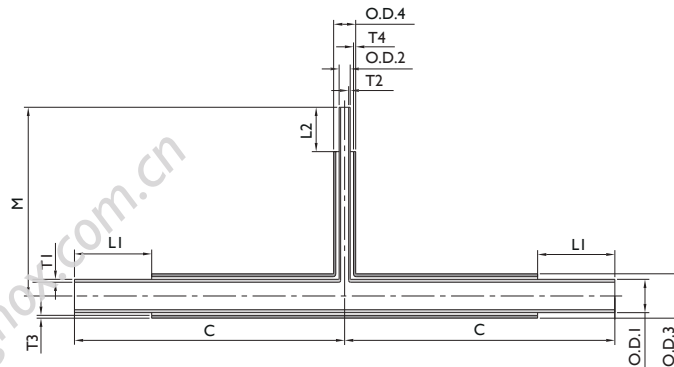
## Coaxial Double Equal Tee 双套管正三通



unit = mm

TUBE SIZE	Inner Tube ØO.D 1	ØO.D 1 Wall Thickness	Outer Tube ØO.D 2	Outer Tube Wall Thickness	L	C	M
1/4"	1/4"	0.89t/1t	1/2"	1.24t	25.4	98.4	98.4
3/8"	3/8"	0.89t/1t	5/8"	1.24t	25.4	101.6	101.6
1/2"	1/2"	1.24t	3/4"	1.65t	25.4	101.6	101.6
3/4"	3/4"	1.65t	1"	1.65t	44.5	161.9	161.9
1"	1"	1.65t	1 1/4"	1.65t	44.5	165.1	165.1
1 1/2"	1 1/2"	1.65t	2"	1.65t	50.8	193.7	193.7

## Coaxial Double Reducing Tee 双套管变径三通

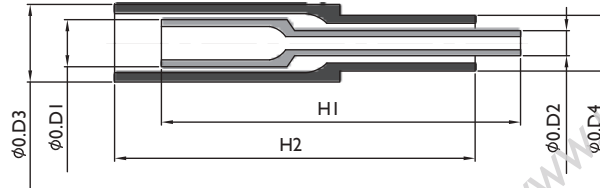


unit = mm

TUBE SIZE	Inner Tube ØO.D 1	ØO.D 1 Wall Thickness	Inner Tube ØO.D 2	ØO.D 2 Wall Thickness	x	Outer Tube ØO.D 3	ØO.D 3 Wall Thickness	Outer Tube ØO.D 4	ØO.D 4 Wall Thickness	L1	L2	M	
3/8"x1/4"	3/8"	0.89t/1t	1/4"	0.89t/1t	x	5/8"	1.24t	1/2"	1.24t	25.4	98.4	25.4	104.6
1/2"x1/4"	1/2"	1.24t	1/4"	0.89t/1t	x	3/4"	1.65t	1/2"	1.24t	25.4	98.4	25.4	104.6
1/2"x3/8"	1/2"	1.24t	3/8"	0.89t/1t	x	3/4"	1.65t	5/8"	1.24t	25.4	101.6	25.4	104.6
3/4"x1/4"	3/4"	1.65t	1/4"	0.89t/1t	x	1"	1.65t	1/2"	1.24t	44.5	155.6	25.4	108
3/4"x3/8"	3/4"	1.65t	3/8"	0.89t/1t	x	1"	1.65t	5/8"	1.24t	44.5	158.8	25.4	108
3/4"x1/2"	3/4"	1.65t	1/2"	1.24t	x	1"	1.65t	3/4"	1.65t	44.5	158.8	25.4	108
1"x1/4"	1"	1.65t	1/4"	0.89t/1t	x	1 1/4"	1.65t	1/2"	1.24t	44.5	155.6	25.4	111
1"x3/8"	1"	1.65t	3/8"	0.89t/1t	x	1 1/4"	1.65t	5/8"	1.24t	44.5	158.8	25.4	111
1"x1/2"	1"	1.65t	1/2"	1.24t	x	1 1/4"	1.65t	3/4"	1.65t	44.5	158.8	25.4	111
1"x3/4"	1"	1.65t	3/4"	1.65t	x	1 1/4"	1.65t	1"	1.65t	44.5	161.9	44.5	168.2
1 1/2"x3/4"	1 1/2"	1.65t	3/4"	1.65t	x	2"	1.65t	1"	1.65t	50.8	181	44.5	177.8
1 1/2"x1"	1 1/2"	1.65t	1"	1.65t	x	2"	1.65t	1 1/4"	1.65t	50.8	184.2	44.5	177.8

# Tube & Pipe Fittings

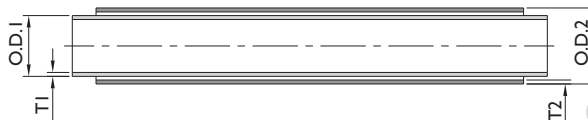
## Coaxial Double Concentric Reducer 双套管变径



unit = mm

TUBE SIZE	Inner Tube Ø.O.D 1	Ø.O.D 1 Wall Thickness	Inner Tube Ø.O.D 2	Ø.O.D 2 Wall Thickness	x	Outer Tube Ø.O.D 3	Ø.O.D 3 Wall Thickness	Outer Tube Ø.O.D 4	Ø.O.D 4 Wall Thickness	H1	H2
3/8"X1/4"	3/8"	0.89t	1/4"	0.89t	x	5/8"	1.24t	1/2"	1.24t	101.6	101.6
1/2"X1/4"	1/2"	1.24t	1/4"	0.89t	x	3/4"	1.65t	1/2"	1.24t	101.6	101.6
1/2"X3/8"	1/2"	1.24t	3/8"	0.89t	x	3/4"	1.65t	5/8"	1.24t	101.6	101.6
3/4"X1/4"	3/4"	1.65t	1/4"	0.89t	x	1"	1.65t	1/2"	1.24t	127	146
3/4"X3/8"	3/4"	1.65t	3/8"	0.89t	x	1"	1.65t	5/8"	1.24t	127	146
3/4"X1/2"	3/4"	1.65t	1/2"	1.24t	x	1"	1.65t	3/4"	1.65t	127	146
1"X1/4"	1"	1.65t	1/4"	0.89t	x	1 1/4"	1.65t	1/2"	1.24t	127	146
1"X3/8"	1"	1.65t	3/8"	0.89t	x	1 1/4"	1.65t	5/8"	1.24t	127	146
1"X1/2"	1"	1.65t	1/2"	1.24t	x	1 1/4"	1.65t	3/4"	1.65t	127	146
1"X3/4"	1"	1.65t	3/4"	1.65t	x	1 1/4"	1.65t	1"	1.65t	165.1	165.1
1 1/2"X1/4"	1 1/2"	1.65t	1/4"	0.89t	x	2"	1.65t	1/2"	1.24t	146	171.5
1 1/2"X3/8"	1 1/2"	1.65t	3/8"	0.89t	x	2"	1.65t	5/8"	1.24t	146	171.5
1 1/2"X1/2"	1 1/2"	1.65t	1/2"	1.24t	x	2"	1.65t	3/4"	1.65t	146	171.5
1 1/2"X3/4"	1 1/2"	1.65t	3/4"	1.65t	x	2"	1.65t	1"	1.65t	184.2	190.5
1 1/2"X1"	1 1/2"	1.65t	1"	1.65t	x	2"	1.65t	1 1/4"	1.65t	184.2	190.5

## Coaxial Double Tube 双套管

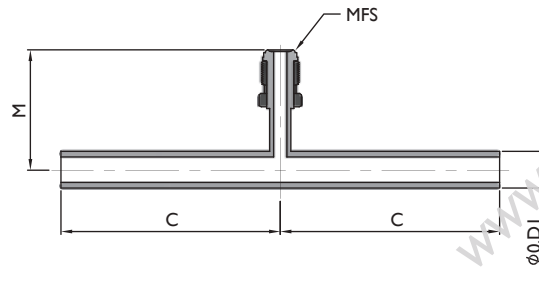


unit = mm

TUBE SIZE	Inner Tube Ø.O.D 1	Outer Tube Ø.O.D 2	Maximum Safe Working Pressure	
			PSI	Bar
1/4"	1/4" x 0.89t	1/2" x 1.24t	3,136	216
3/8"	3/8" x 0.89t	5/8" x 1.24t	2,477	171
1/2"	1/2" x 1.24t	3/4" x 1.65t	2,759	190
3/4"	3/4" x 1.65t	1" x 1.65t	1,631	112
1"	1" x 1.65t	1 1/4" x 1.65t	1,294	89
1 1/2"	1 1/2" x 1.65t	2" x 1.65t	796	55

# Tube & Pipe Fittings

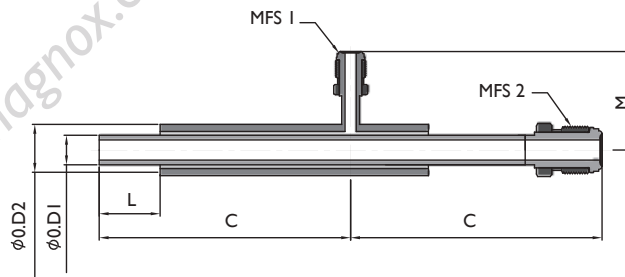
## Coaxial Joint Tee (Male/Female) 转接三通



unit = mm

TUBE SIZE	Ø.D I	Ø.D I Wall Thickness	C	M	MFS
1/4"	1/2"	1.24t	73	38.4	1/4"
3/8"	5/8"	1.24t	76.2	39.9	
1/2"	3/4"	1.65t	76.2	41.2	
3/4"	1"	1.65t	117.5	44.2	
1"	1 1/4"	1.65t	120.6	47.5	
1 1/2"	2"	1.65t	142.9	57.2	

## Coaxial Double Joint Tee (Male/Female) 双套管转接三通

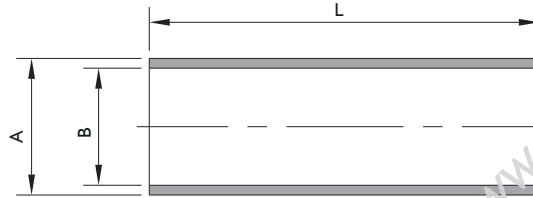


unit = mm

TUBE SIZE	Ø.D I	Ø.D I Wall Thickness	Ø.D 2	Ø.D 2 Wall Thickness	L	C	M	MFS 1	MFS 2
1/4"	1/4"	0.89t/1t	1/2"	1.24t	25.4	98.4	38.4	1/4"	1/4"
3/8"	3/8"	0.89t/1t	5/8"	1.24t	25.4	101.6	39.9	1/4"	1/2"
1/2"	1/2"	1.24t	3/4"	1.65t	25.4	101.6	41.2	1/4"	1/2"

# Tube & Pipe Fittings

## Coaxial Sleeve 滑套



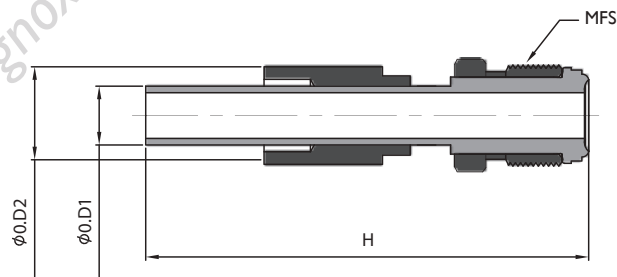
unit = mm

TUBE SIZE	A	B	L	L(E4*)	L(E5*)	L(E6*)
1/4"	5/8"	Ø12.8/Ø12.9	63.5	101.6	127	152.4
3/8"	3/4"	Ø16/Ø16.1	63.5	101.6	127	152.4
1/2"	7/8"	Ø19.2/Ø19.3	63.5	101.6	127	152.4
3/4"	1 1/8"	Ø25.5/Ø25.6	101.6	N/A	127	152.4
1"	1 3/8"	Ø31.9/Ø32	101.6	N/A	N/A	N/A
1 1/2"	2 1/8"	Ø51.3/Ø51.4	114.3	N/A	N/A	N/A

※ Extra Length

## Coaxial Double Face Seal Weld Gland (Male/Female)

### 双套管VCR Gland 转接



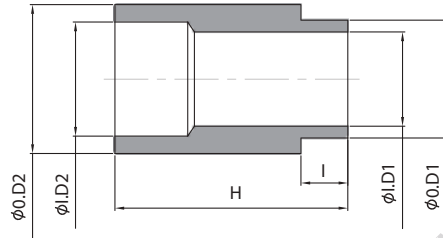
unit = mm

TUBE SIZE	Ø.O.D 1	Ø.O.D 1 Wall Thickness	Ø.O.D 2	Ø.O.D 2 Wall Thickness	L	H	MFS
1/4"	1/4"	0.89t/1t	1/2"	1.24t	25.4	88.9	1/4"
3/8"	3/8"	0.89t/1t	5/8"	1.24t	25.4	88.9	1/2"
1/2"	1/2"	1.24t	3/4"	1.65t	25.4	88.9	1/2"



# Tube & Pipe Fittings

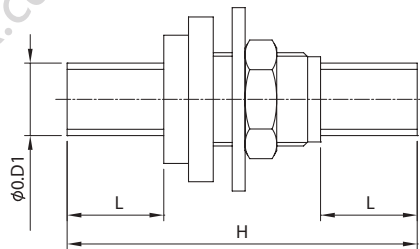
## Coaxial Terminator 双套管终端



unit = mm

TUBE SIZE	Ø.O.D 1	Ø.I.D 1	Ø.O.D 2	Ø.I.D 2	I	H
1/4"	Ø8.3	1/4"	1/2"	Ø10.2	6.35	31.8
3/8"	Ø11.4	3/8"	5/8"	Ø13.4	6.35	31.8
1/2"	Ø15.3	1/2"	3/4"	Ø15.7	6.35	31.8
3/4"	Ø22.5	3/4"	1"	Ø22.1	6.35	50.8
1"	Ø28.8	1"	1 1/4"	Ø28.4	6.35	50.8
1 1/2"	Ø41.5	1 1/2"	2"	Ø47.4	6.35	57.2

## Coaxial Bulkhead Fitting Assembly 双套管穿板套件



unit = mm

TUBE SIZE	Ø.O.D 1	Ø.O.D 1 Wall Thickness	L	H	HEX. NUT
1/4"	1/2"	1.24t	25.4	92	3/4"-16UNF
3/8"	5/8"	1.24t	25.4	92	7/8"-14UNF
1/2"	3/4"	1.65t	25.4	92	1 1/16"-12UN
3/4"	1"	1.65t	44.5	130	1 5/16"-12UN
1"	1 1/2"	1.65t	44.5	130	1 5/8"-12UN

# MEMO

